

elizabeth garouste



en attendant les barbares

elizabeth garouste

- 1946 - Born in Paris
- 1979 - Start of collaboration with Mattia Bonetti
- 1983 - First pieces by Garouste & Bonetti,
published by En Attendant les Barbares
- 1991 - Creation with Gérard Garouste,
of the foundation La Source
- 1991 - Garouste & Bonetti exhibition at the gallery
En Attendant les Barbares
- 1997 - Garouste & Bonetti exhibition at the
Musée Pompidou
- 2001 - Separation with Mattia Bonetti
- 2007 - “Fragmentations”, solo exhibition
at the gallery En Attendant les Barbares
- 2013 - “Éclectismes”, solo exhibition
at the gallery En Attendant les Barbares
- 2017 - Named Grand Officer of the Legion of Honor



en attendant les barbares



HIM SMALL TABLE

Springing beyond memory,
beyond quotation, the work of Élizabéth Garouste
freely explores the infinite possibilities of creation.

Her eclectic outlook invites reflection on art
and its potential expressions: subject, material,
form, color are pretexts for rhythmic
compositions, vibrant and inspired sketches.

As part of her exhibitions at
En Attendant les Barbares, she invites,
in a dazzling collaboration, art, design and
craftsmanship, to compose a testimony based on
gesture and project.

A beautiful way to celebrate a life of artistic
complicity with Agnès Kentish, her editor since
the beginning,

and with Pierre Basse, former ironworker of
Diego Giacometti, who works exclusively for the
gallery.

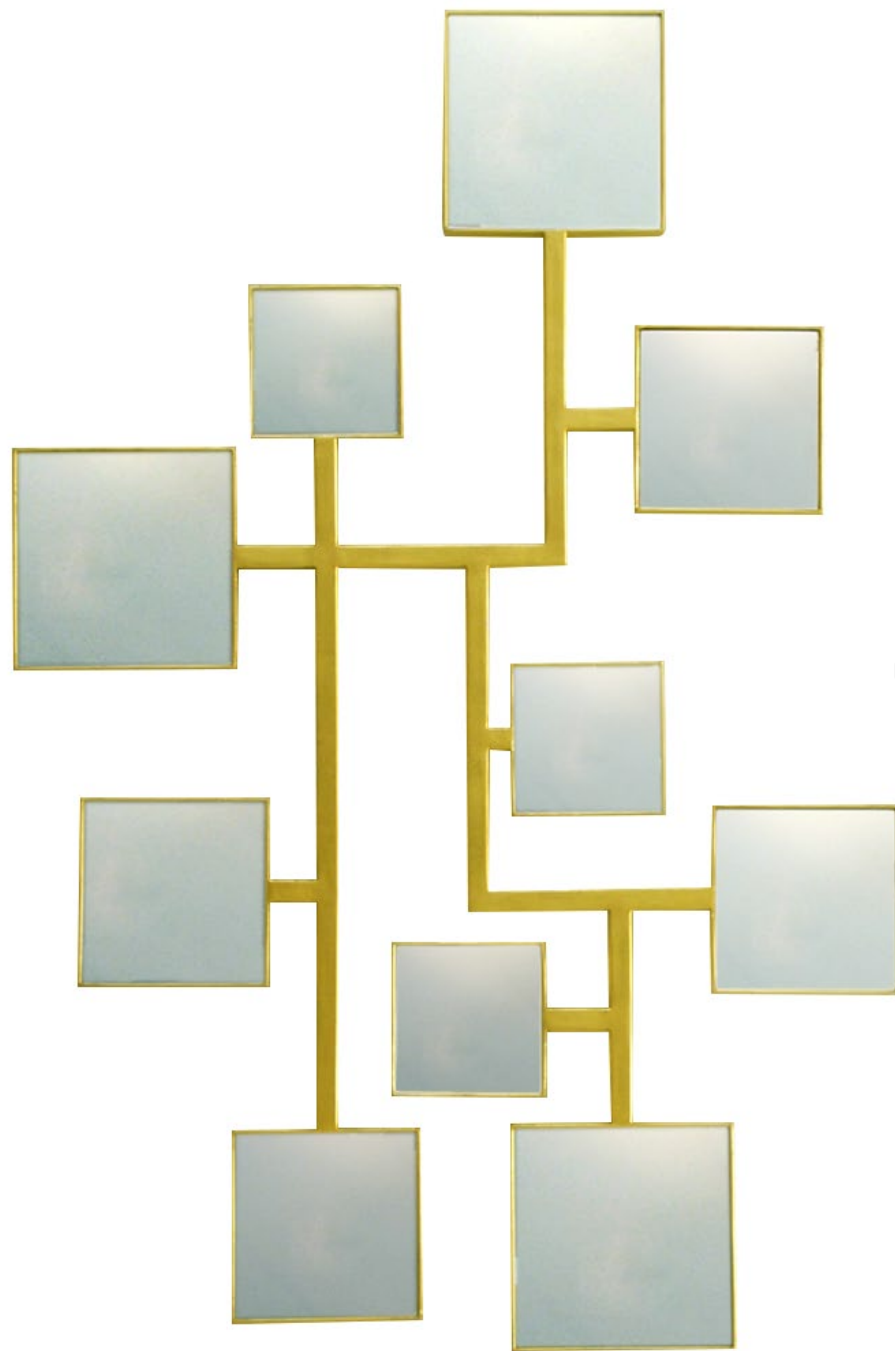
ANNE BONY

02



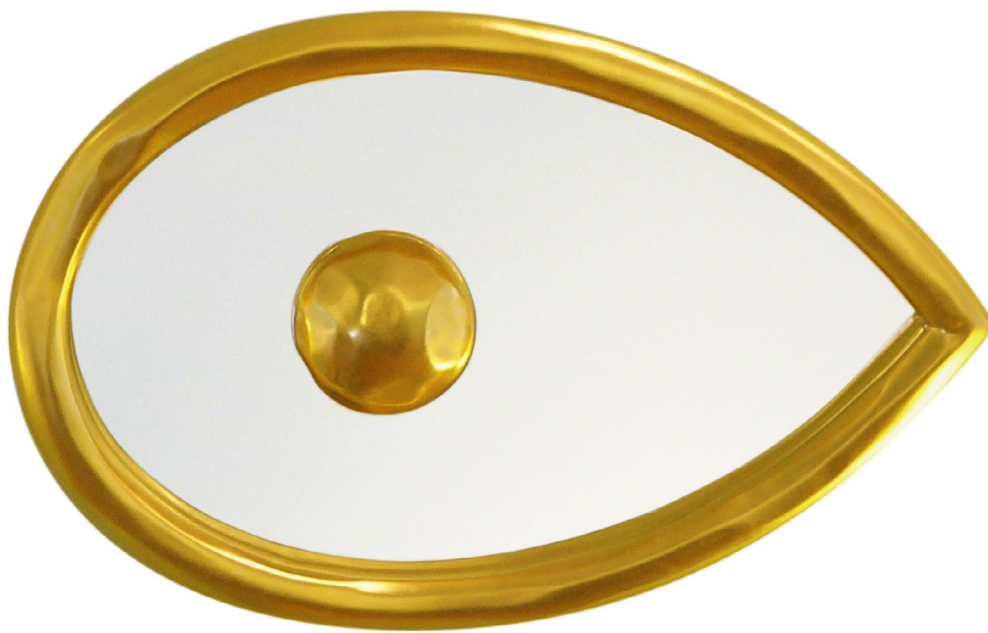
DOUBLE GOLD SQUARE LAMP

03



GOLD SMALL SQUARES MIRROR

0 4



EYE MIRROR

0 5



BEAUTY CONSOLE

06



FRAGMENTATIONS 2 CONSOLE

07



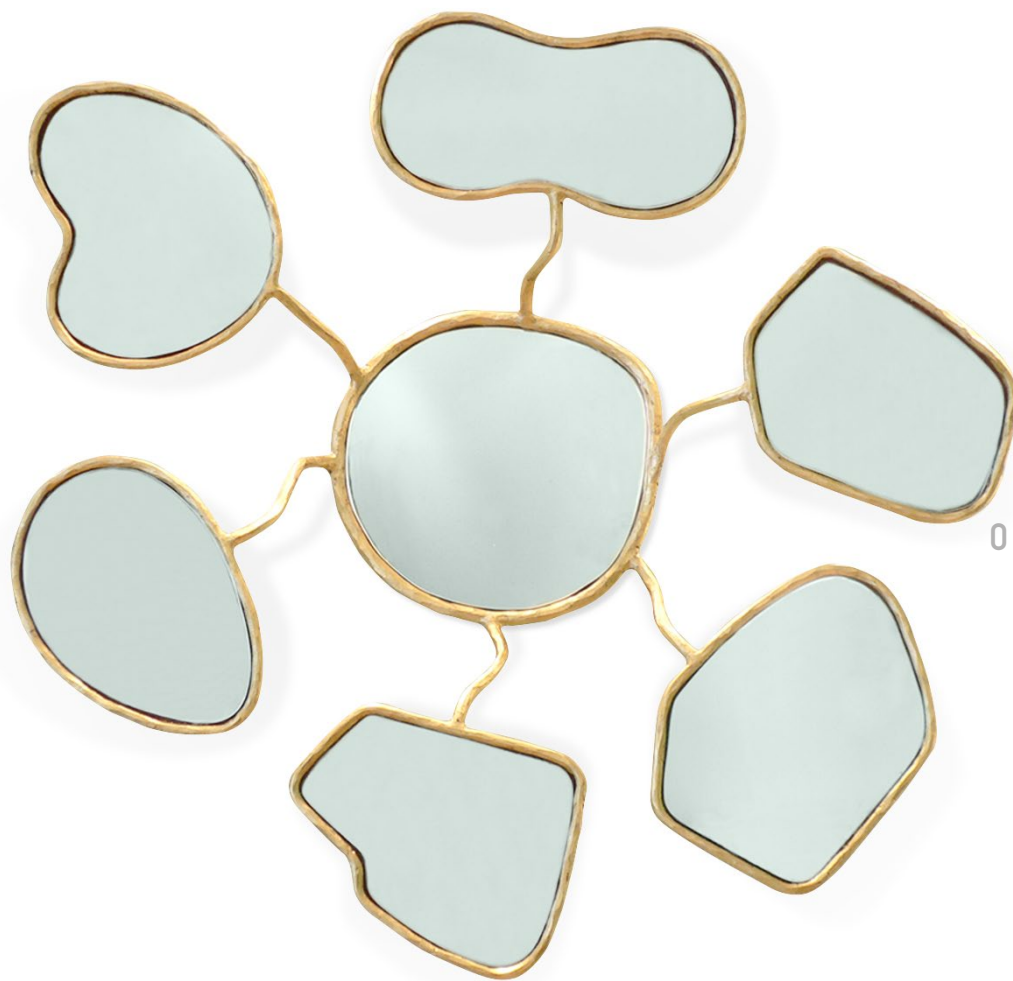
SMALL METEORITE LAMP

08



SHANA CANDLESTICK

09



FLOWER MIRROR

10



11



LADY MADONNA ARMCHAIR



12

OR(S) WHITE GOLD LAMP



13

FRAGMENTATIONS CONSOLE 1

14



SILVER CANDLESTICK

15



CROSS WALL LAMP

16



17



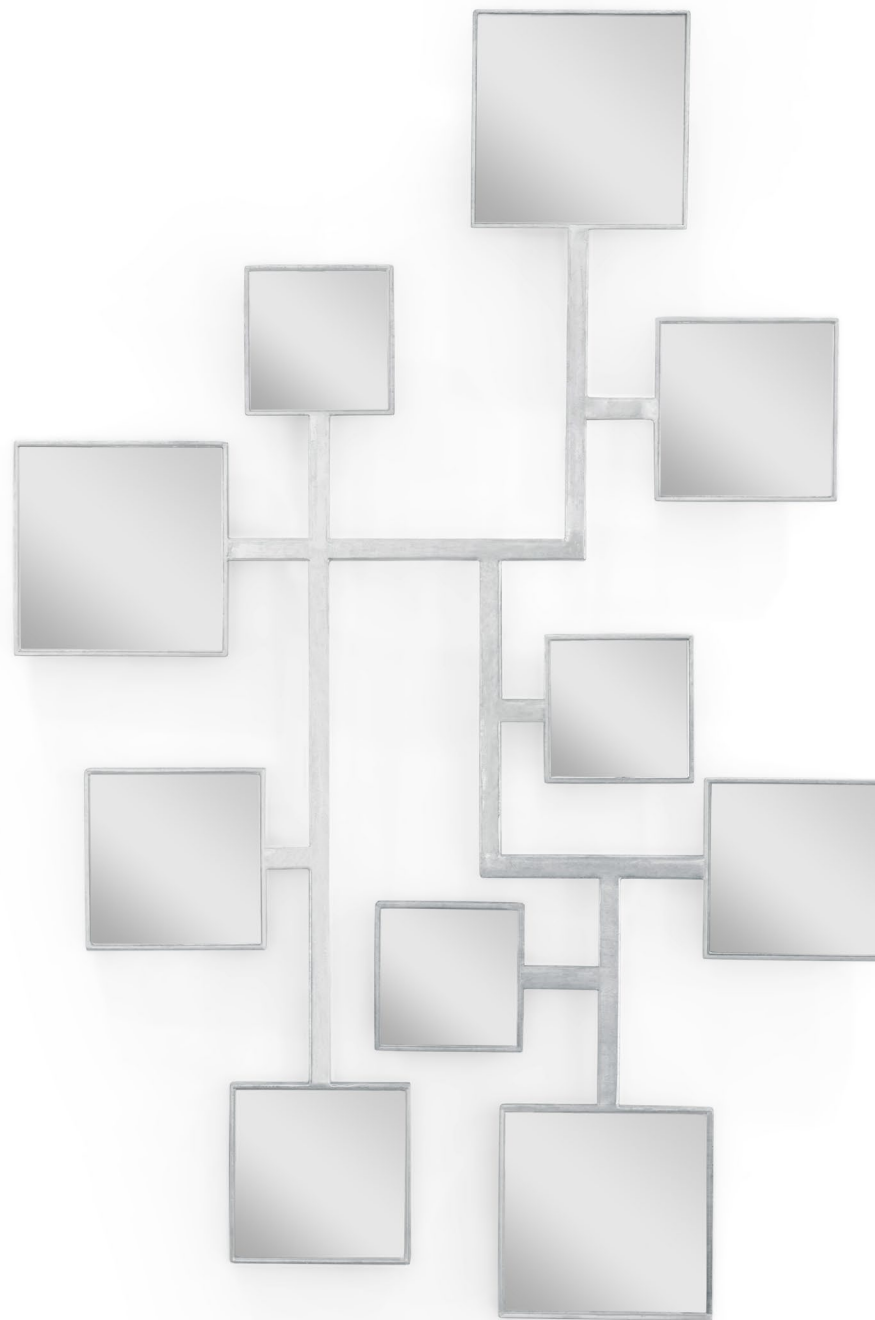
SQUARES LAMPS

18



FRAGMENTATIONS STAND

19



SMALL SQUARES LEAF MIRROR

20



THE FOOL WALL LAMP

21



THE AFRICAN WALL LAMP

22

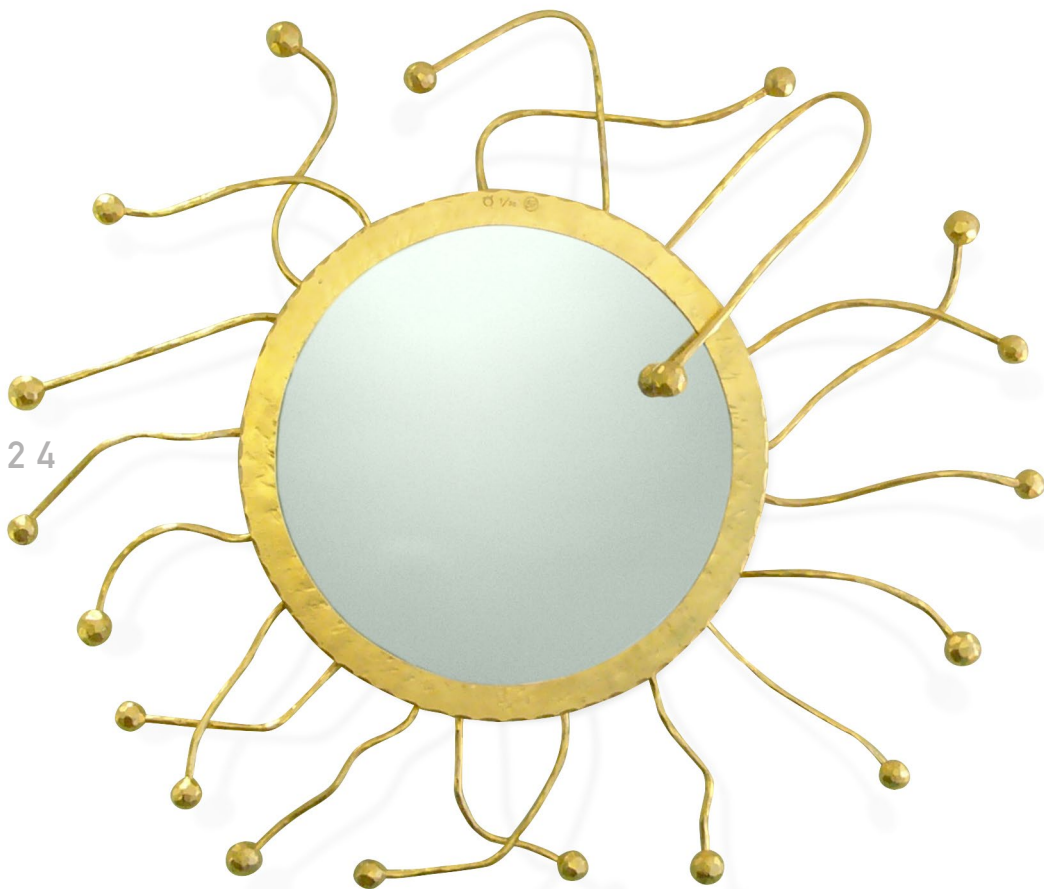


MONUMENTAL CANDLESTICK

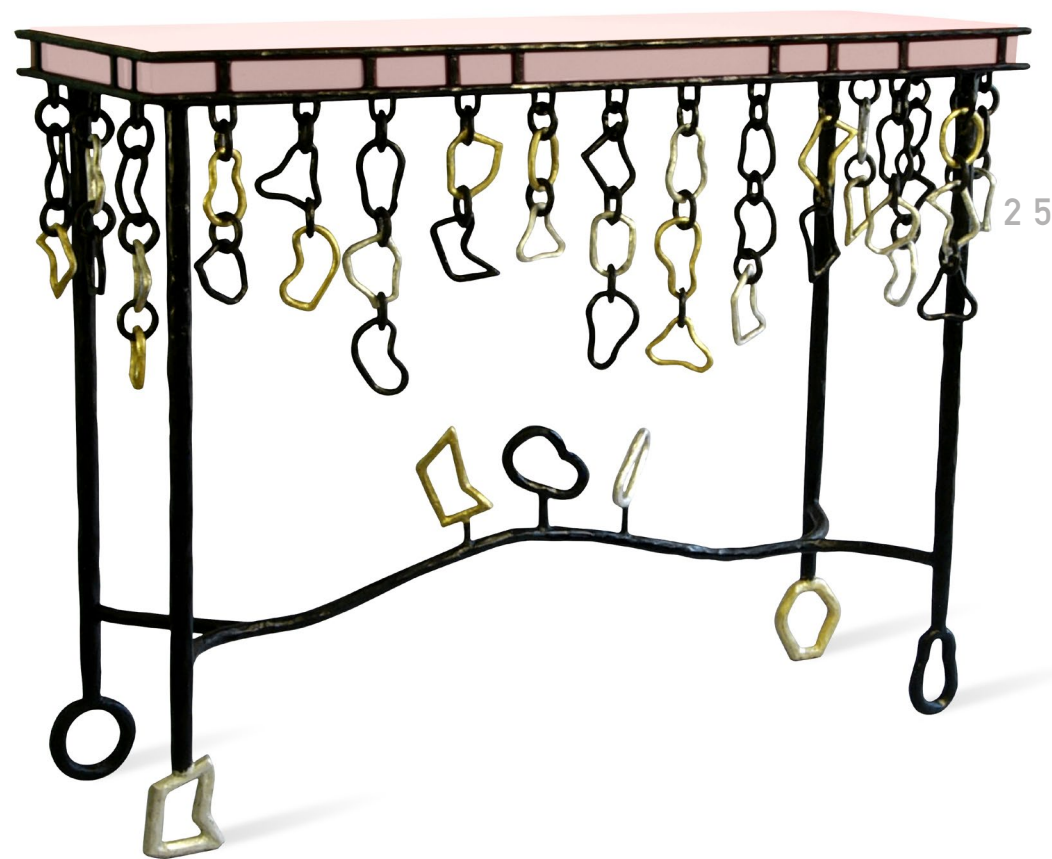
23



BIG METEORITE LAMP



SUN KING MIRROR



LES ENCHAÎNÉS CONSOLE

26



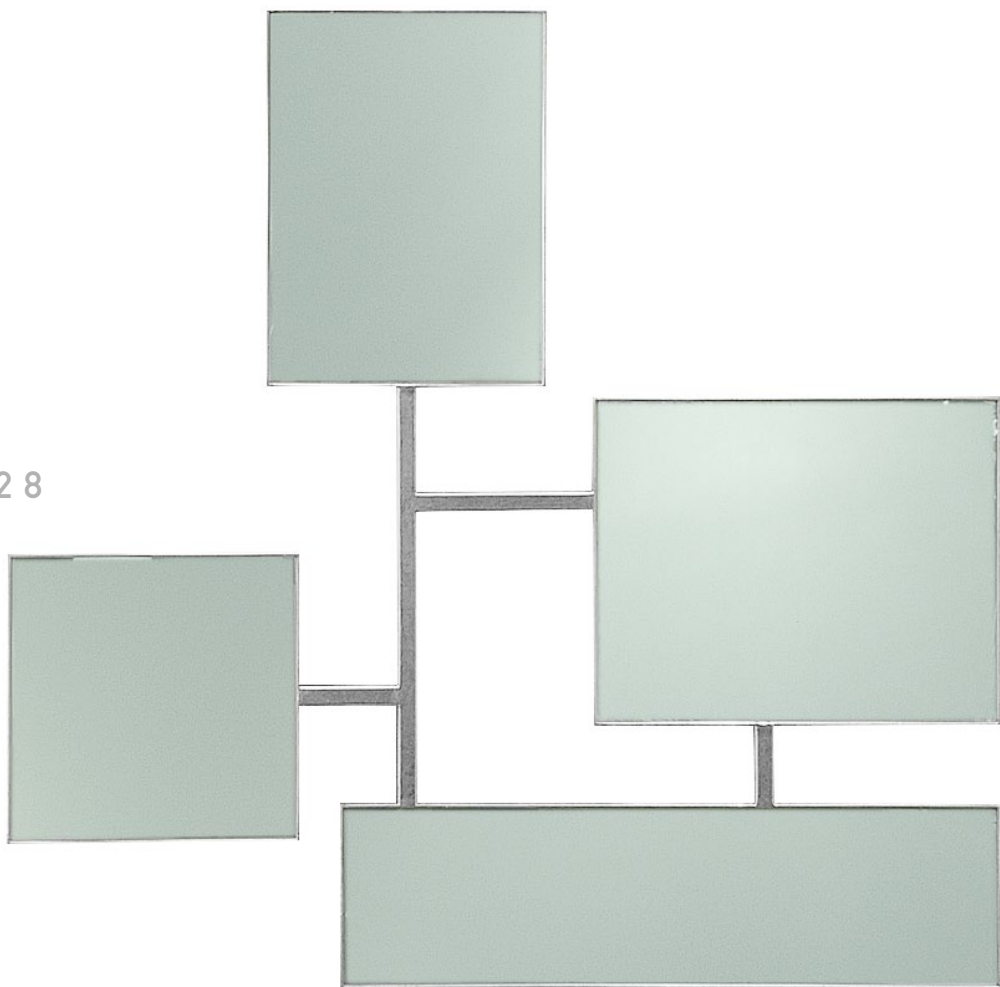
LUKA CANDLESTICK

27



RAINY DAY LAMP

28



JOAQUIM MIRROR

29



HER SMALL TABLE

30



THE RING LAMP

31



THE SQUARE LAMP

3 2



ARABESQUE WALL LAMP

3 3



GOLD(S) SMALL TABLE

34



GREEN STANDING LAMP

35



SUNNY AFTERNOON CABINET

36



DIAMOND MIRROR



DIAMOND LAMP

37

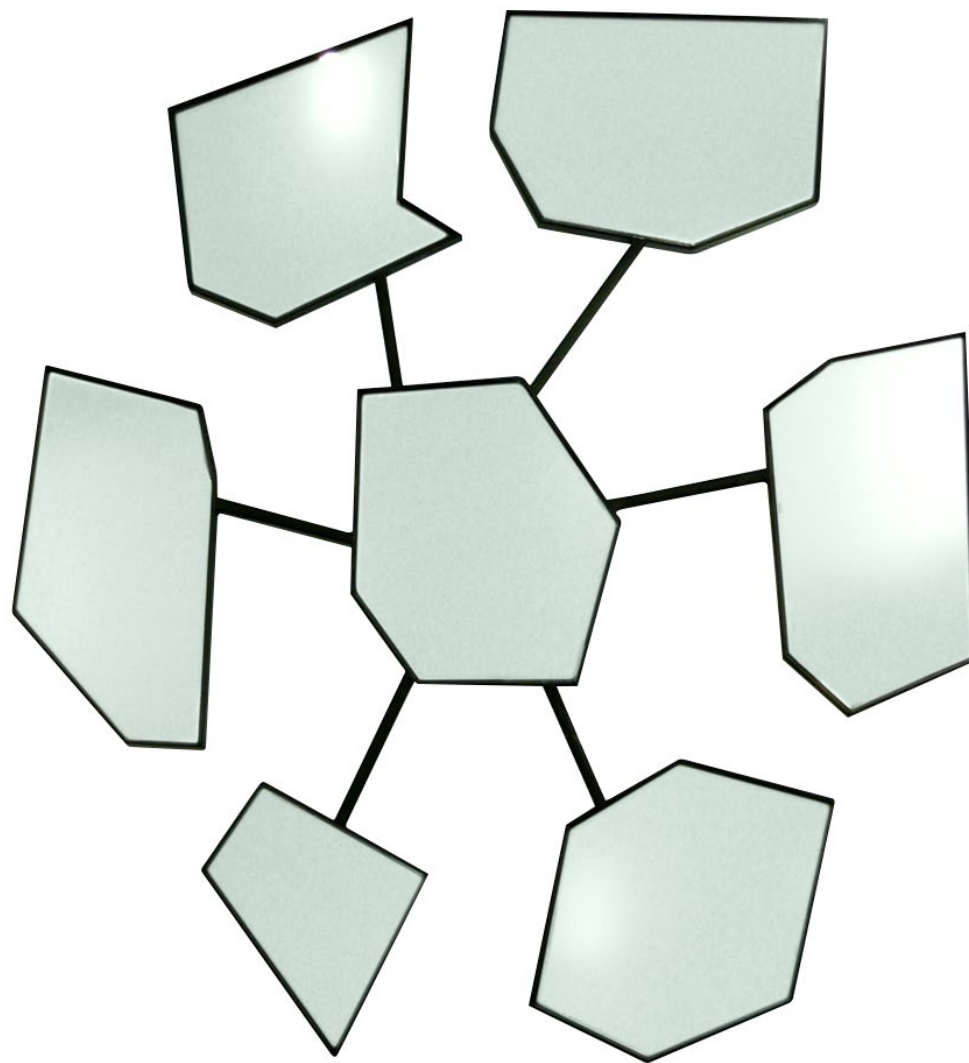


38



RIGOLO STANDING LAMP

39



BIG BANG MIRROR

40



CHARABIA LAMP

01. **HIM SMALL TABLE** - Bronze small table, green patina. 30 examples + 4 artist's proofs. Other patinas: gold, brown.

02. **DOUBLE GOLD SQUARE LAMP** - Square section wrought iron gilded with yellow gold leaf. Chintz lampshade.

03. **GOLD SMALL SQUARES MIRROR** - Square section wrought iron gilded with yellow gold leaf. 30 examples.

04. **EYE MIRROR** - Sculpted wood covered with gold leaf. 30 examples. Alternative finishes: brown, black, white gold leaf.

05. **BEAUTY CONSOLE** - Structure in hand wrought iron gilded with yellow gold leaf. Sculpted wood top also gilded with yellow gold leaf. 8 examples + 4 artist's proofs. Alternative finish: white gold leaf.

06. **FRAGMENTATIONS 2 CONSOLE** - Bronze and hand wrought iron. Oak wood top. 30 examples.

07. **SMALL METEORITE LAMP** - Black and gold polished patinated bronze. Chintz lampshade. 30 examples.

08. **SHANA CANDLESTICK** - Black patinated bronze, candle holders in polished gold bronze. 30 examples. Two editions: 6 or 7 candle holders.

09. **FLOWER MIRROR** - Hand wrought iron gilded with yellow gold leaf. 30 exemplaires.

10. **LADY MADONNA ARMCHAIR** - Patinated hand wrought iron. Choice of fabric. 30 examples + 4 artist's proofs. Alternative finishes: white gold leaf, yellow gold leaf, polished metal patina.

11. **LADY MADONNA ARMCHAIR** - Patinated hand wrought iron. Choice of fabric. 30 examples + 4 artist's proofs. Alternative finishes: white gold leaf, yellow gold leaf, polished metal patina.

12. **OR(S) WHITE GOLD LAMP** - Hand wrought iron gilded with white gold leaf. Chintz lampshade. Alternative finishes: yellow gold leaf, black or brown patina.

13. **FRAGMENTATIONS CONSOLE 1** - Wrought iron partly gilded with gold leaf. Choice of wooden tops. 30 examples.

14. **SILVER CANDLESTICK** - Sterling silver plated bronze. 30 examples.

15. **CROSS WALL LAMP** - Wall light in wrought iron gilded with white gold leaf. Alternative finishes: yellow gold leaf, pink gold leaf, black or brown patina.



16, 17. **SQUARE LAMPS** - Left: Square section wrought iron gilded with white gold leaf. Chintz lampshade. Right: Black patinated square section wrought iron. Chintz lampshade.

18. **FRAGMENTATIONS STAND** - Small high table in black patinated wrought iron partly gilded with gold leaf. Top in dark tinted oak. 30 examples.

19. **SMALL SQUARES LEAF MIRROR** - Square section wrought iron gilded with white gold leaf. 30 examples.

20. **THE FOOL WALL LAMP** - Wall light in gold polished bronze. Alternative bronze patinas: brown, black, green, venetian red.

21. **THE AFRICAN WALL LAMP** - Wall light in brown patinated bronze. Alternative bronze patinas: polished gold, black, green, venetian red.

22. **MONUMENTAL CANDLESTICK** - Black patinated bronze. Gold polished bronze candle holders. 30 examples.

23. **BIG METEORITE LAMP** - Black and gold polished patinated bronze. Metallic gold lampshade. 30 examples.

24. **SUN KING MIRROR** - Hand wrought iron gilded with yellow gold leaf. 30 examples. Alternative finishes: white gold leaf, brown or black patina.

25. **LES ENCHAÎNÉS CONSOLE** - Hand wrought iron chain gilded partially with white and yellow gold leaf, and black patina. Lacquered wood top. 8 examples.

26. **LUKA CANDLESTICK** - Black patinated bronze. Gold polished bronze candle holders. 30 examples.

27. **RAINY DAY LAMP** - Black and gold polished patinated bronze. Chintz lampshade. 8 examples + 4 artist's proofs. Alternative bronze patinas: polished gold, green, venetian red.

28. **JOAQUIM MIRROR** - Square section wrought iron gilded with white gold leaf. 30 examples. Alternative finishes: yellow gold leaf, black or brown patina.

29. **HER SMALL TABLE** - Bronze small table, green patina. 30 examples + 4 artist's proofs. Other patinas: gold, brown.

30. **THE RING LAMP** - Black patinated hand wrought iron. Chintz lampshade. 30 examples.

31. THE SQUARE LAMP - Black patinated hand wrought iron. Chintz lampshade. 30 examples.

32. ARABESQUE WALL LAMP - Wall light in hand wrought iron gilded with yellow gold leaf. Alternative finishes: white gold leaf, pink gold leaf, black or brown patina.

33. GOLD(S) SMALL TABLE - Small table with structure in square section wrought iron. Feet and ornament gilded with yellow gold leaf. Tinted mahogany top. 8 examples + 4 artist's proofs.

34. GREEN STANDING LAMP - Standard lamp in hand wrought, sculpted iron. Chintz lampshades. 30 examples.

35. SUNNY AFTERNOON CABINET - Structure in hand wrought iron, cabinet in patinated iron, ceramic doors decorated with an original design by Elizabeth Garouste. 8 examples + 4 artist's proofs.

36. DIAMOND MIRROR - Square section wrought iron gilded with yellow gold leaf. Bevelled mirrors. 8 examples + 4 artist's proofs. Alternative finish: white gold leaf.

37. DIAMOND LAMP - Hand wrought iron. Chintz lampshade. Alternative finishes: yellow gold leaf, white gold leaf, black or brown patina.

38. RIGOLO STANDING LAMP - Standard lamp in hand wrought, sculpted iron. Chintz lampshades. 30 examples.

39. BIG BANG MIRROR - Black patinated hand wrought iron. 30 examples. Alternative finishes: yellow gold leaf, white gold leaf, or brown patina.

40. CHARABIA LAMP - Black patinated, square section wrought iron. Chintz lampshades. Alternative finishes: gold patina, white gold leaf, yellow gold leaf, pink gold leaf.

gallery
en attendant les barbares

35 rue de grenelle 75007 paris

+331 42 22 65 25
agnes@barbares.com



barbares.com